

Nicor Gas Nomination System

Transaction Type	Contract Code and Name	Receipt Point Code & Name – Delivery Point Code and Name	Path Name
External Pipeline to Supplier Pool	Your 4 digit Broker Number + “EXT” + Pipeline Code + (Your 4 digit Broker Number + “Pipeline Contract @” Pipeline Name Ex: 2222EXT5 (2222 Pipeline Contract @ ANR)	“EXT->”+Your 4 digit Broker Number + “Pool” + Pipeline Code Ex: EXT->2222Pool5	“UPSCON@EXTP ->” + Your 4 digit Broker Number + “Pool” + Pipeline Code Ex: UPSCON@EXTP->2222Pool5
Title Transfer	Your 4 digit Broker Number + “TT” + Pipeline Code + (Your 4 digit Broker Number + “Title Transfer @” + Pipeline Name Ex: 2222TT5 (2222 Title Transfer @ANR)	Your 4 digit Broker Number + “Pool” + Pipeline Code + “->” + Receiving Company 4 digit Broker Number + “Pool” + Pipeline Code Ex: 2222Pool5 -> 0801Pool5	Your 4 digit Broker Number + “Pool” + pipeline code + “->” + Receiving Company 4 digit Broker Number + “Pool” + Pipeline Code Ex: 2222Pool5 -> 0801Pool5
Supplier Pool to End User Group	“G” + 4 digit End User Group Transportation ID + Your 4 digit Broker Number + (Your 4 digit Broker Number “to” 4 digit End User Transportation ID “@” Pipeline Name) Ex: G11142222 (2222 to 1114 @ANR)	Your 4 digit Broker Number + “Pool” + Pipeline Code + “-> NGEUP” Ex: 2222Pool5->NGEUP	Your 4 digit Broker Number + “Pool” + Pipeline Code + “-> G” + 4 digit Transportation ID of End User Group + “@NGEUP” Ex: 2222Pool5 -> G1234@NGEUP
Supplier Pool to Individual End User	5 digit End User Contract Code + Your 4 digit Broker Number + (Your 4 digit Broker Number “to” 10 digit End User Transportation ID “@” Pipeline Name) Ex: 100022222 (2222 to 9084562871 @ANR)	Your 4 digit Broker Number + “Pool” + Pipeline Code + “-> NGEUP” Ex: 2222Pool5->NGEUP	Your 4 digit broker number + “Pool” + Pipeline Code + “->” + 5 digit End User Contract Code + “@NGEUP” Ex: 2222Pool5 -> 10002 @NGEUP
Supplier Pool to Customer Select Pool	“C” + Last 4 digits of CSEL Customer Transportation ID + Your 4 digit Broker Number + (Your 4 digit Broker Number “to” 6 digit CSEL Customer Transportation ID “@” Pipeline) Ex: C12342222 (2222 to 123409 @ANR)	Your 4 digit Broker Number + “Pool” + Pipeline Code “-> NGEUP” Ex: 2222Pool5->NGEUP	Your 4 digit Broker Number + “Pool” + pipeline code + “-> C” + last 4 digits of CSEL group number + “@NGEUP”
Injection into Hub (Ferc)	“H” + Your 4 digit Broker Number + “I” + Pipeline Code + (Your 4 digit Broker Number + “Hub Injection @” + Pipeline Name) Ex: H2222I5 (2222 Hub Injection @ ANR)	Your 4 digit Broker Number + “Pool” + Pipeline Code “-> HUBPT” Ex: 2222Pool5->HUBPT	Your 4 digit broker number + “Pool” + pipeline code + “-> F” + 4 digit contract code + “@HUBPT” Ex. 2222Pool5 -> F2456@HUBPT


Nicor Gas Nomination System

Transaction Type	Contract Code and Name	Receipt Point Code & Name – Delivery Point Code and Name	Path Name
Injection into Hub (Rate 21)	“H” + Your 4 digit Broker Number + “I” + Pipeline Code + (Your 4 digit Broker Number + “Hub Injection @” + Pipeline Name) Ex: H2222I5 (2222 Hub Injection @ ANR)	Your 4 digit Broker Number + “Pool” + Pipeline Code “-> HUBPT” Ex: 2222Pool5->HUBPT	Your 4 digit broker number + “Pool” + pipeline code + “-> R” + 4 digit contract code + “@HUBPT” Ex. 2222Pool5 -> R2456@HUBPT
Withdrawal from Hub (Ferc)	“H” + Your 4 digit Broker Number + “W” + Pipeline Code + (Your 4 digit Broker Number + “Hub Withdrawal @” + Pipeline Name) Ex: H2222W5 (2222 Hub Withdrawal @ANR)	“HUBPT->” + Your 4 digit Broker Number + “Pool” + Pipeline Code Ex: HUBPT->2222Pool5	“F” + 4 digit contract code + “@HUBPT ->” + 4 digit broker number + “Pool” + pipeline code EX: F2456@HUBPT -> 0801Pool5
Withdrawal from Hub (Rate 21)	“H” + Your 4 digit Broker Number + “W” + Pipeline Code + (Your 4 digit Broker Number + “Hub Withdrawal @” + Pipeline Name) Ex: H2222W5 (2222 Hub Withdrawal @ANR)	“HUBPT->” + Your 4 digit Broker Number + “Pool” + Pipeline Code Ex: HUBPT->2222Pool5	“F” + 4 digit contract code + “@HUBPT ->” + 4 digit broker number + “Pool” + pipeline code EX: F2456@HUBPT -> 0801Pool5

3. Drill down to the Date Range text boxes by clicking the plus sign. The date range shows the dates that have been nominated.


	StartDate	EndDate	Nominated MMBtu			Scheduled MMBtu			Allocated MMBtu			Rank
			Gross	Fuel	Net	Gross	Fuel	Net	Gross	Fuel	Net	
[-] H02222I5 (2222 Hub Injection @ANR)												
[-] 2222Pool5->HUBPT												
[-] 2222Pool5->F9087@HUBPT												
[-] 07/16/2008 [calendar icon] 07/31/2008 [calendar icon]												99 + ✂
[-] 2222EXT5 (2222 Pipeline Contract @ANR)			80,000	0	80,000							
[-] EXTP->2222Pool5			80,000	0	80,000							
[-] UPSCON@EXTP->2222Pool5			80,000	0	80,000							
[-] 07/12/2008 Through 07/31/2008-262			5,000	0	5,000							
[-] 07/16/2008 [calendar icon] 07/31/2008 [calendar icon]												99 + ✂
[-] G11142222 (2222 to 1114 @ANR)			16,000	0	16,000							
[-] 100092222 (2222 to 222222222@ANR)			1,000	0	1,000							
[-] 2222TT5 (2222TitleTransfer@ANR)			3,000	0	3,000							


Save Cancel

Field	Function
Start Date End Date	Click on the calendar icon  to select the dates for which to nominate. You can nominate for up 1 calendar month.

Nicor Gas Nomination System

Field	Function
Nominated Gross	Enter the gross nomination amount. Note: If you are nominating in the Evening Cycle, you will nominate the full amount for the Timely and Evening Cycles. For example, you nominated 5,000 MMBtu in the Timely Cycle, and you want to increase the nomination by 200 MMBtu. During the Evening Cycle, you will nominate 5,200 MMBtu.
Nominated Net	This field is not currently being utilized. It will populate with the gross nominated amount at save.
Rank	This field is not currently being utilized. The default value is 99.

4. To cut a nomination that has not been added, click the  icon.

5. Click the  icon to add the nomination.

	StartDate	EndDate	Nominated MMBtu			Scheduled MMBtu			Allocated MMBtu			Rank
			Gross	Fuel	Net	Gross	Fuel	Net	Gross	Fuel	Net	
H0222215 (2222 Hub Injection @ANR)												
2222Pool5->HUBPT												
2222Pool5->F9087@HUBPT												
	07/16/2008	07/31/2008	7000	0	7000							99
	07/16/2008	07/31/2008										99
			80,000	0	80,000							
2222EXT5 (2222 Pipeline Contract @ANR)												
EXTP->2222Pool5												
			80,000	0	80,000							
UPSCON@EXTP->2222Pool5												
			5,000	0	5,000							
07/12/2008 Through 07/31/2008-262												
	07/16/2008	07/31/2008	7000	0	7000							99
	07/16/2008	07/31/2008										99
			16,000	0	16,000							
G11142222 (2222 to 1114 @ANR)												
			1,000	0	1,000							
100092222 (2222 to 222222222@ANR)												
			3,000	0	3,000							
2222TT5 (2222TitleTransfer@ANR)												

Save Cancel

6. To save the nominations, click the **Save** button.

7. If no errors exist, a window will display with the message “Your nominations have passed validation. All nominations have been saved.”



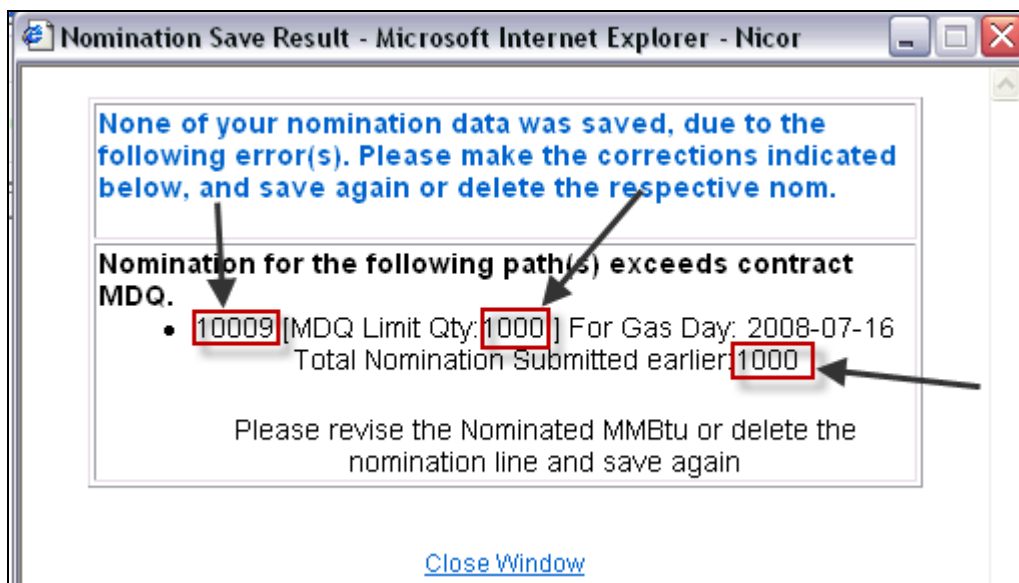
8. Click [Close Window](#) to close the window.

Nicor Gas Nomination System

	StartDate	EndDate	Nominated MMBtu			Scheduled MMBtu			Allocated MMBtu			Rank
			Gross	Fuel	Net	Gross	Fuel	Net	Gross	Fuel	Net	
[-] H0222215 (2222 Hub Injection @ANR)			112,000	0	112,000							
[-] 2222EXT5 (2222 Pipeline Contract @ANR)			112,000	0	112,000							
[-] G11142222 (2222 to 1114 @ANR)			16,000	0	16,000							
[-] 100092222 (2222 to 222222222@ANR)			1,000	0	1,000							
[-] 2222Pool5->NGEUP			1,000	0	1,000							
[-] 2222Pool5->10009@NGEUP			1,000	0	1,000							
[-] 07/14/2008 Through 07/16/2008-262			1,000	0	1,000							
[-] 07/16/2008			2,500	0	2,500						99	
[-] 07/16/2008											99	
[-] 2222TT5 (2222TitleTransfer@ANR)			3,000	0	3,000							
[-] 2222Pool5->1111Pool5			3,000	0	3,000							
[-] 2222Pool5->9999Pool5												

Note: For this scenario, we are nominating 2,500 to an end user with contract code 10009 who has a MDQ of 1000.

- If you nominate to an end user or inject into the Hub, and you exceed the MDQ, a window will display with the following message. “None of your nomination data was saved, due to the following error(s). Please make the corrections indicated and save again or delete respective nom.” This message will also appear if another supplier has already nominated to an end user, and your nomination has resulted in the user being over their MDQ.



- The error message displays the end user contract code (10009), their MDQ Limit (1000) and the total nomination that has already been submitted for the user (1000).
- To save your nominations, you must change or delete the nomination.
- To view the last nomination save result, click “View Nomination Save Result.”

Nicor Gas Nomination System

Company Contract **Nomination** Reports Logout

Nomination

Nomination Result: [View Nomination Save Result](#)

Date Range **07/16/2008** Through **07/31/2008** Totals are shown for **07/16/2008** Through **07/31/2008**

Pipeline : **ANR Pipeline**

Company : **#1 Gas Supply** Expand All Collapse All

- [-] Contract Code and Name
 - [-] Receipt Point Code & Name -> Delivery Point Code & Name
 - [-] Path Name
 - [-] Date Range

15. The last Nomination Save Result window will display.

Nomination Save Result - Microsoft Internet Explorer - Nicor

None of your nomination data was saved, due to the following error(s). Please make the corrections indicated below, and save again or delete the respective nom.

Nomination for the following path(s) exceeds contract MDQ.

- 10009 [MDQ Limit Qty: 1000] For Gas Day: 2008-07-16
Total Nomination Submitted earlier: 1000

Please revise the Nominated MMBtu or delete the nomination line and save again

[Close Window](#)

Update Nomination and Evening Nomination Cycle

- To update your nominations in the Timely or Evening Cycle, navigate to the Nomination Result page and drill down to the Path Name and Date Range.

	StartDate	EndDate	Nominated MMBtu			Scheduled MMBtu			Allocated MMBtu			Rank
			Gross	Fuel	Net	Gross	Fuel	Net	Gross	Fuel	Net	
[-] H0222215 (2222 Hub Injection @ANR)			112,000	0	112,000							
[-] 2222EXT5 (2222 Pipeline Contract @ANR)			112,000	0	112,000							
[-] EXTP->2222Pool5			112,000	0	112,000							
[-] UPSCON@EXTP->2222Pool5			112,000	0	112,000							
[-] 07/16/2008 Through 07/31/2008-264	07/16/2008	07/31/2008	7,000	0	7,000							
[-] 07/16/2008	07/16/2008	07/31/2008										99 +
[-] G11142222 (2222 to 1114 @ANR)			16,000	0	16,000							
[-] 2222Pool5->NGEUP			16,000	0	16,000							
[-] 2222Pool5->G1114@NGEUP			16,000	0	16,000							
[-] 07/12/2008 Through 07/31/2008-262	07/12/2008	07/31/2008	1,000	0	1,000							
[-] 07/16/2008	07/16/2008	07/31/2008										99 +
[-] 100092222 (2222 to 222222222@ANR)			1,000	0	1,000							
[-] 2222TT5 (2222TitleTransfer@ANR)			3,000	0	3,000							

Save Cancel

Nicor Gas Nomination System

- Once a nomination is created, it can not be deleted. To cancel an entered nomination, enter 0 in the gross amount. To update a nomination, enter the new nomination amount. The last nomination entered for a date will show in the system.

	StartDate	EndDate	Nominated MMBtu		
			Gross	Fuel	Net
+ H0222215 (2222 Hub Injection @ANR)			112,000	0	112,000
- 2222EXT5 (2222 Pipeline Contract @ANR)			112,000	0	112,000
- EXTP->2222Pool5			112,000	0	112,000
- UPSCON@EXTP->2222Pool5			112,000	0	112,000
- 07/16/2008 Through 07/31/2008-264			7,000	0	7,000
- 07/16/2008			3500		0
- G11142222 (2222 to 1114 @ANR)			16,000	0	16,000
- 2222Pool5->NGEUP			16,000	0	16,000
- 2222Pool5->G1114@NGEUP			16,000	0	16,000
- 07/12/2008 Through 07/31/2008-262			1,000	0	1,000
- 07/16/2008			0		0
+ 100092222 (2222 to 2222222222@ANR)			0	0	1,000
+ 2222TT5 (2222TitleTransfer@ANR)			3,000	0	3,000

Save Cancel

Note: For this scenario, we currently have a nomination from external pipeline to supplier pool for 7/16/08 – 7/31/08 for 7000 MMBtu. We also have a nomination from our pool to end user group 1114 from 7/12/08 – 7/31/08 for 1000 MMBtu. We are lowering the external pipeline to supplier pool nomination to 3500. We are also changing the nomination for 7/16/08 to the end user group 1114 to 0.

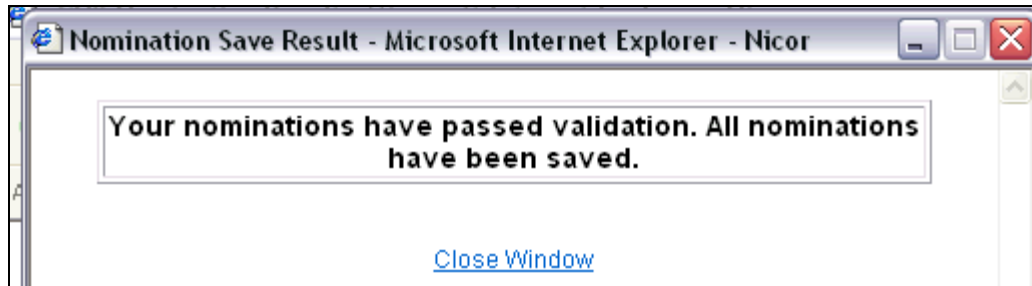
- Select the appropriate dates by selecting the calendars and enter 3500 and 0 for the Gross amounts.
- Click the + icon to add the nominations.

Nicor Gas Nomination System

StartDate	EndDate	Nominated MMBtu			Scheduled MMBtu			Allocated MMBtu			Rank
		Gross	Fuel	Net	Gross	Fuel	Net	Gross	Fuel	Net	
H02222I5 (2222 Hub Injection @ANR)		112,000	0	112,000							
2222EXT5 (2222 Pipeline Contract @ANR)		112,000	0	112,000							
EXTP->2222Pool5		112,000	0	112,000							
UPSCON@EXTP->2222Pool5		112,000	0	112,000							
07/16/2008 Through 07/31/2008-264		7,000	0	7,000							
07/16/2008	07/16/2008	3500	0	3500						99	
07/16/2008	07/31/2008									99	
G11142222 (2222 to 1114 @ANR)		16,000	0	16,000							
2222Pool5->NGEUP		16,000	0	16,000							
2222Pool5->G1114@NGEUP		16,000	0	16,000							
07/12/2008 Through 07/31/2008-262		1,000	0	1,000							
07/16/2008	07/16/2008	0	0	0						99	
07/16/2008	07/31/2008									99	
100092222 (2222 to 2222222222@ANR)		1,000	0	1,000							
2222TT5 (2222TitleTransfer@ANR)		3,000	0	3,000							

Save Cancel

5. Click the **Save** button.



6. The Nomination Save Result window will open. Click [Close Window](#) to close the window.

StartDate	EndDate	Nominated MMBtu		
		Gross	Fuel	Net
H02222I5 (2222 Hub Injection @ANR)		112,000	0	112,000
2222EXT5 (2222 Pipeline Contract @ANR)		108,500	0	108,500
EXTP->2222Pool5		108,500	0	108,500
UPSCON@EXTP->2222Pool5		108,500	0	108,500
07/16/2008 Through 07/16/2008-265		3,500	0	3,500
07/17/2008 Through 07/31/2008-264		7,000	0	7,000
07/16/2008	07/31/2008			
G11142222 (2222 to 1114 @ANR)		15,000	0	15,000
2222Pool5->NGEUP		15,000	0	15,000
2222Pool5->G1114@NGEUP		15,000	0	15,000
07/16/2008 Through 07/16/2008-265		0	0	0
07/17/2008 Through 07/31/2008-262		1,000	0	1,000
07/16/2008	07/31/2008			

Nicor Gas Nomination System

7. The nomination amount for external pipeline to pool changes to 3500 for 7/16/2008. **Note:** The nomination amount for 7/17/2008 – 7/31/2008 does not change.
8. The nomination amount for supplier pool to end user group 1114 changes to 0. **Note:** The nomination amount for 7/17/2008 – 7/31/2008 does not change.
9. Once the Nicor SuperAdmin has scheduled and allocated the nominations, you can navigate back to the Nomination Result page to view the scheduled and allocated amounts.

Nomination Result:

Date Range **07/17/2008** Through **07/17/2008** Totals are shown for **07/17/2008** Through **07/17/2008**

Pipeline : **ANR Pipeline**

Company : **#1 Gas Supply** Expand All Collapse All

- [-] Contract Code and Name
 - [-] Receipt Point Code & Name -> Delivery Point Code & Name
 - [-] Path Name
 - [-] Date Range

	StartDate	EndDate	Nominated MMBtu			Scheduled MMBtu			Allocated MMBtu			Rank
			Gross	Fuel	Net	Gross	Fuel	Net	Gross	Fuel	Net	
[-] H0222215 (2222 Hub Injection @ANR)			7,000	0	7,000	7,000	0	7,000	7,000	0	7,000	
[-] 2222EXT5 (2222 Pipeline Contract @ANR)			12,000	0	12,000	5,000	0	5,000	5,000	0	5,000	
[-] G11142222 (2222 to 1114 @ANR)			1,000	0	1,000	1,000	0	1,000	1,000	0	1,000	
[-] 100092222 (2222 to 2222222222@ANR)												
[-] 2222TT5 (2222TitleTransfer@ANR)			4,000	0	4,000	4,000	0	4,000	4,000	0	4,000	